

# **A46 Coventry Junctions (Walsgrave)**

## **Scheme Number: TR010066**

### **6.2 Environmental Statement Figures**

#### **Figure 2.4 Environmental Masterplan**

APFP Regulation 5(1)(a)

Planning Act 2008

Infrastructure Planning (Applications: Prescribed Forms  
and Procedure) Regulations 2009

Volume 6

November 2024

Infrastructure Planning

Planning Act 2008

The Infrastructure Planning  
(Applications: Prescribed Forms and  
Procedure) Regulations 2009

A46 Coventry Junctions (Walsgrave)  
Development Consent Order 202[x]

ENVIRONMENTAL STATEMENT FIGURES  
Figure 2.4 Environmental Masterplan

Regulation Number	Regulation 5(2)(a)
Planning Inspectorate Scheme Reference	TR010066
Application Document Reference	TR010066/APP/6.2
Author	A46 Coventry Junctions (Walsgrave) Project Team, National Highways

Version	Date	Status of Version
Rev 0	November 2024	Application Issue

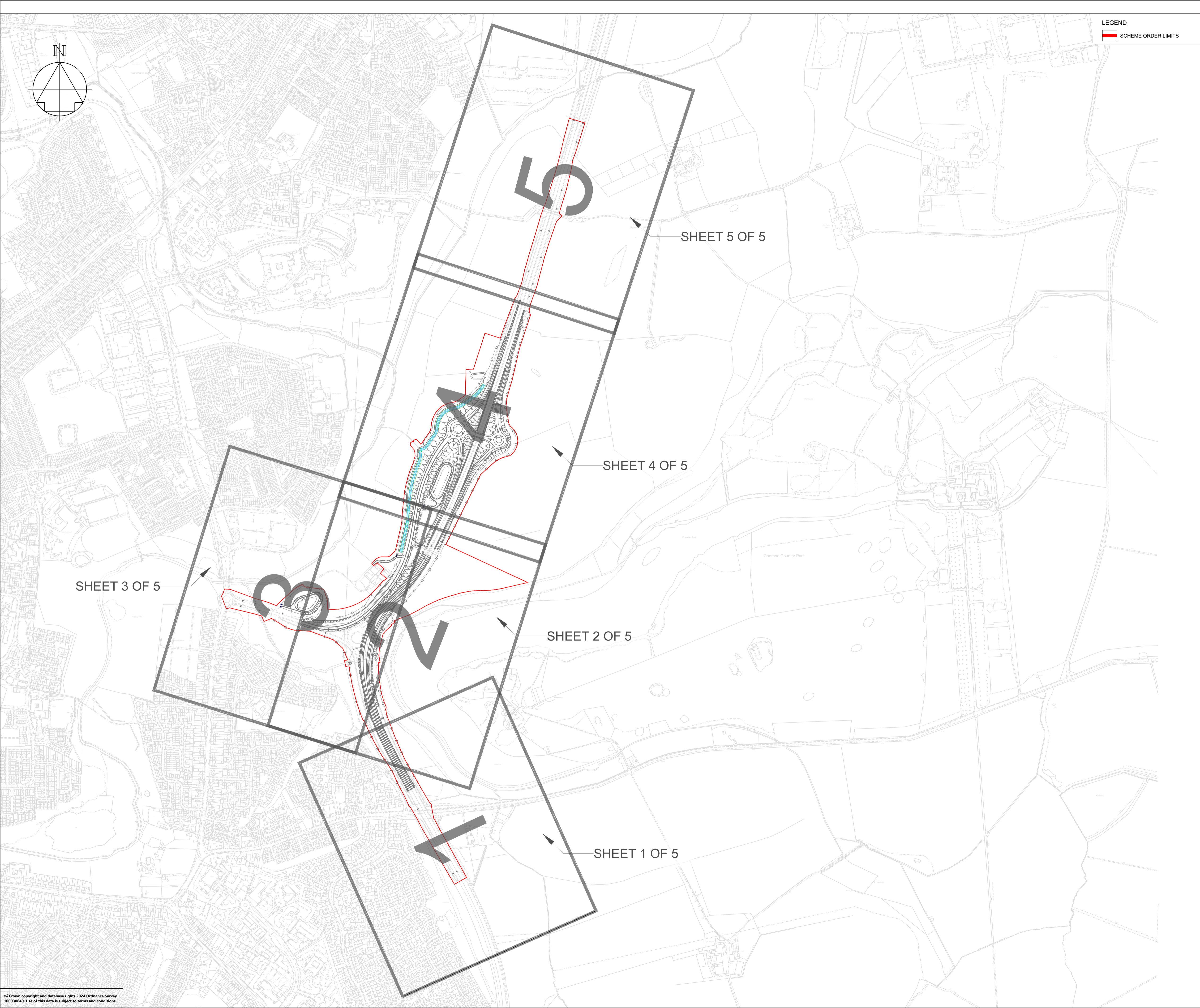
## CONTENTS

1.	Environmental Statement Figures.....	2
----	--------------------------------------	---

# 1. Environmental Statement Figures

1.1.1. This document contains the following figures:

Figure	Figure Name
Figure 2.4	Environmental Masterplan – Overview Plan
Figure 2.4	Environmental Masterplan – Sheet 1 of 5
Figure 2.4	Environmental Masterplan – Sheet 2 of 5
Figure 2.4	Environmental Masterplan – Sheet 3 of 5
Figure 2.4	Environmental Masterplan – Sheet 4 of 5
Figure 2.4	Environmental Masterplan – Sheet 5 of 5
Figure 2.4	Environmental Masterplan – Indicative Plant Schedule Sheet 1 of 2
Figure 2.4	Environmental Masterplan – Indicative Plant Schedule Sheet 2 of 2



LEGEND

SCHEME ORDER LIMITS

- NOTES
- THIS DRAWING SHALL BE USED FOR THE PURPOSE SHOWN IN THE TITLE BOX ONLY.
  - THIS DRAWING IS TO BE READ IN CONJUNCTION WITH ALL RELEVANT DRAWINGS / DESIGN ELEMENTS. ALL ASSOCIATED DESIGN INFORMATION IS SHOWN FOR REFERENCE ONLY. REFER TO SPECIFIC DRAWING PACKAGE FOR FURTHER DETAILS.
    - ENVIRONMENTAL MASTERPLAN FOR DCO SUBMISSION OVERVIEW PLAN AND LEGEND
    - ENVIRONMENTAL MASTERPLAN FOR DCO SUBMISSION (LANDSCAPE & ECOLOGY) SHEETS 1 TO 5
    - TREE PROTECTION PLAN - SHEETS 1 TO 5 IN APPENDIX 7.4 (TR010066/APP/6.3)
    - TREE CONSTRAINTS PLAN - SHEETS 1 TO 5 IN APPENDIX 7.4 (TR010066/APP/6.3)
    - HEDGEROW PLANS SHEETS 1 TO 5 (TR010066/APP/2.11)
    - ENGINEERING PLANS SHEETS 1 TO 11 (TR010066/APP/2.5)
    - GENERAL ARRANGEMENT SHEETS 1 TO 5 (TR010066/APP/2.6)
    - DRAINAGE PLANS SHEETS 1 TO 5 (TR010066/APP/2.7)
  - FOR LANDSCAPE ELEMENT AND ENVIRONMENTAL ELEMENT CODES REFER TO DMRB LD117 LANDSCAPE DESIGN.
  - DO NOT SCALE FROM THIS DRAWING.

KEY TO SYMBOLS


P01	18/10/24	FOR DCO SUBMISSION	APad	SWel	JLas
REV	DATE	REVISION NOTE	ORG	CHKD	APPD

CLIENT

PROJECT TITLE

A46 COVENTRY JUNCTIONS (WALSGRAVE)

PROJECT STAGE

DCO APPLICATION

DRAWING TITLE

FIGURE 2.4  
ENVIRONMENTAL MASTERPLAN FOR DCO  
OVERVIEW PLAN

DEVELOPMENT CONSENT ORDER (DCO) - APPLICATION NUMBER

TR010066/APP/6.2

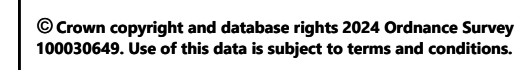
SUITABILITY

FOR INFORMATION

SHEET SIZE	SCALE	STATUS	REVISION
A1	N/A	S2	P01

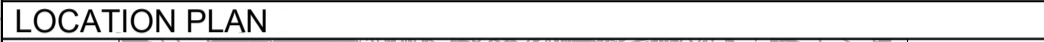
DRAWING NUMBER

HE604820-OIL-ELS-00-DR-LE-32000



## NOTES

1. THIS DRAWING SHALL BE USED FOR THE PURPOSE SHOWN IN THE TITLE BOX ONLY.
2. THIS DRAWING IS TO BE READ IN CONJUNCTION WITH ALL RELEVANT DRAWINGS / DESIGN ELEMENTS. ALL ASSOCIATED DESIGN INFORMATION IS SHOWN FOR REFERENCE ONLY. REFER TO SPECIFIC DRAWING PACKAGE FOR FURTHER DETAILS.
  - ENVIRONMENTAL MASTERPLAN FOR DCO SUBMISSION OVERVIEW PLAN AND LEGEND
  - ENVIRONMENTAL MASTERPLAN FOR DCO SUBMISSION (LANDSCAPE & ECOLOGY) SHEETS 1 TO 5
  - TREE PROTECTION PLAN - SHEETS 1 TO 5 IN APPENDIX 7.4 (TR010066/APP/6.3)
  - TREE CONSTRAINTS PLAN - SHEETS 1 TO 5 IN APPENDIX 7.4 (TR010066/APP/6.3)
  - HEDGEROW PLANS SHEETS 1 TO 5 (TR010066/APP/2.11)
  - ENGINEERING PLANS SHEETS 1 TO 11 (TR010066/APP/2.5)
  - GENERAL ARRANGEMENT SHEETS 1 TO 5 (TR010066/APP/2.6)
  - DRAINAGE PLANS SHEETS 1 TO 5 (TR010066/APP/2.7)
3. FOR LANDSCAPE ELEMENT AND ENVIRONMENTAL ELEMENT CODES REFER TO DMRB LD117 LANDSCAPE DESIGN.
4. DO NOT SCALE FROM THIS DRAWING.



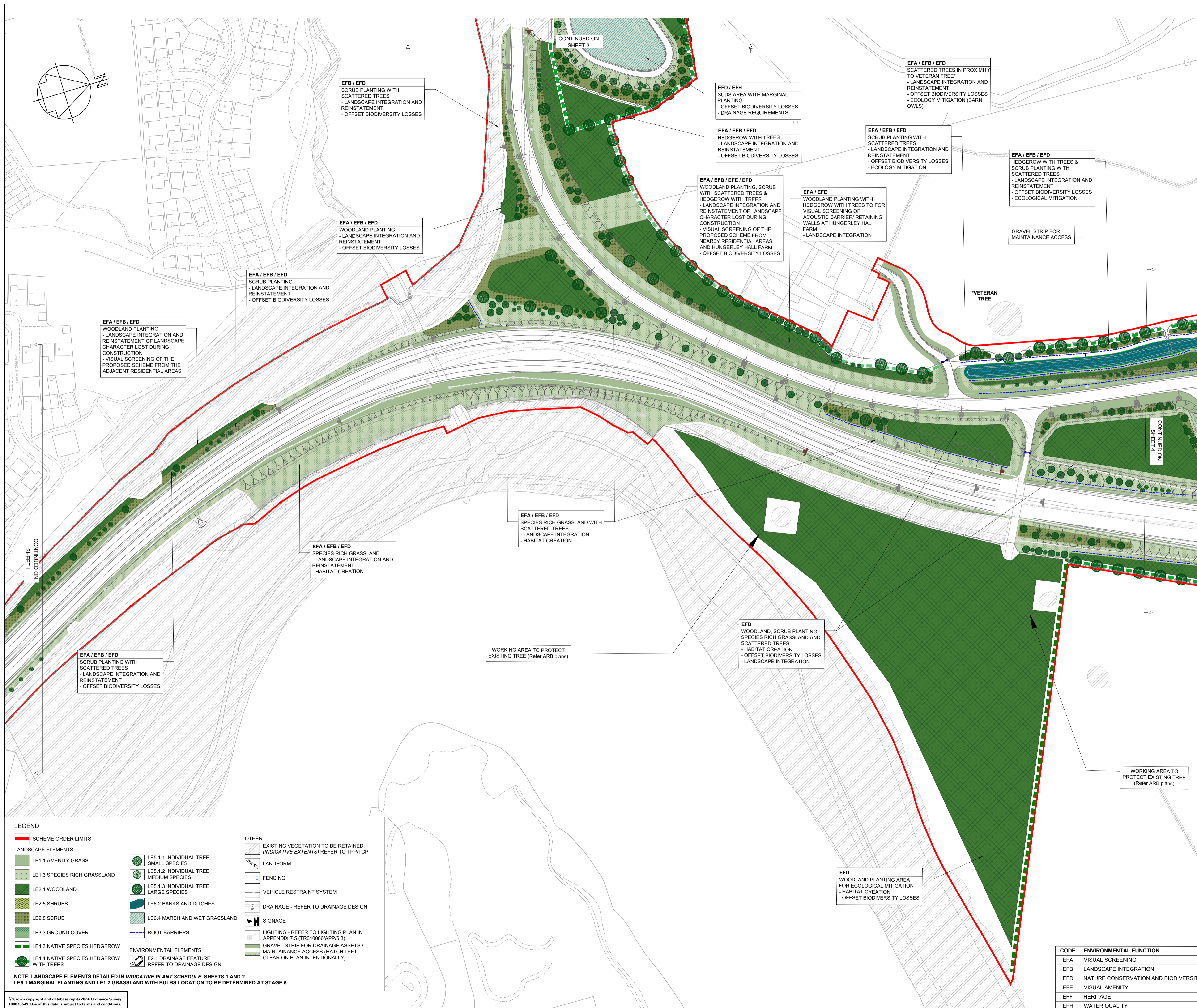
P01	18/10/24	FOR DCO SUBMISSION	APad	SWel	JLas
REV	DATE	REVISION NOTE	ORG	CHK'D	APP'D



SUITABILITY  
FOR INFORMATION

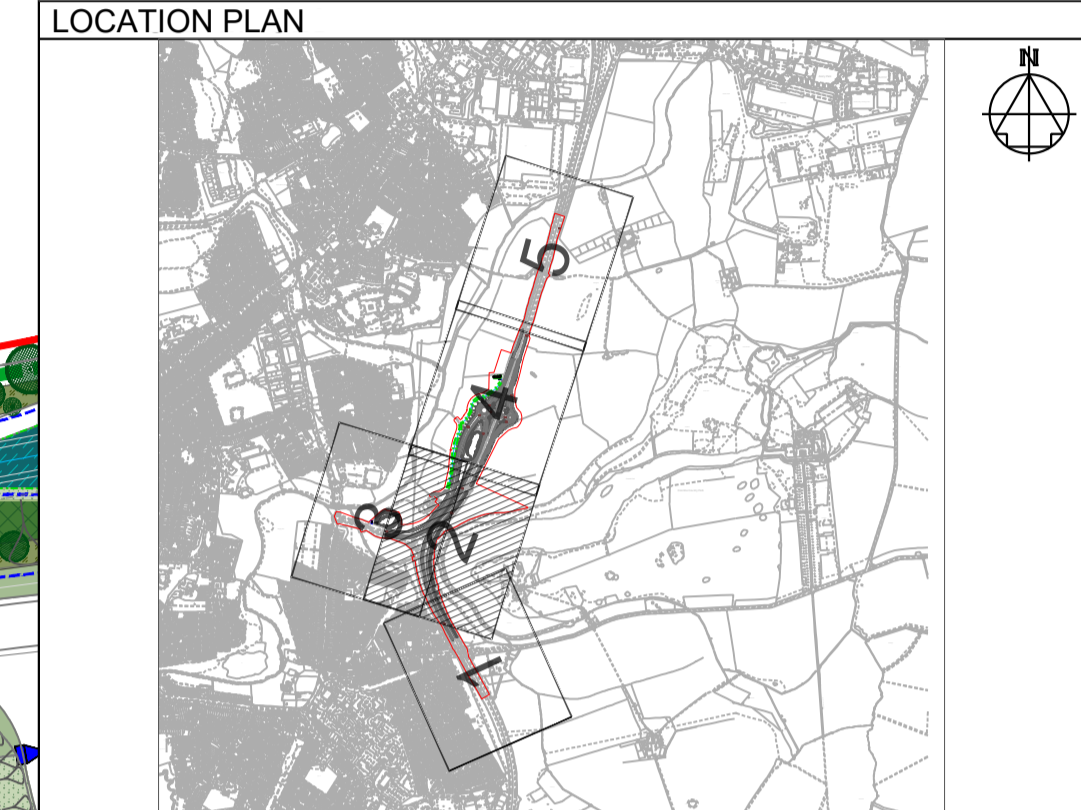
DRAWING NUMBER  
HE604820-OIL-ELS-00-DR-LE-32001

NOTE: LANDSCAPE ELEMENTS DETAILED IN *INDICATIVE PLANT SCHEDULE* SHEETS 1 AND 2.  
LE6.1 MARGINAL PLANTING AND LE1.2 GRASSLAND WITH BULBS LOCATION TO BE DETERMINED AT STAGE 5.



## NOTES

1. THIS DRAWING SHALL BE USED FOR THE PURPOSE SHOWN IN THE TITLE BOX ONLY.
2. THIS DRAWING IS TO BE READ IN CONJUNCTION WITH ALL RELEVANT DRAWINGS / DESIGN ELEMENTS. ALL ASSOCIATED DESIGN INFORMATION IS SHOWN FOR REFERENCE ONLY. REFER TO SPECIFIC DRAWING PACKAGE FOR FURTHER DETAILS.
  - ENVIRONMENTAL MASTERPLAN FOR DCO SUBMISSION OVERVIEW PLAN AND LEGEND
  - ENVIRONMENTAL MASTERPLAN FOR DCO SUBMISSION (LANDSCAPE & ECOLOGY) SHEETS 1 TO 5
  - TREE PROTECTION PLAN - SHEETS 1 TO 5 IN APPENDIX 7.4 (TR010066/APP/6.3)
  - TREE CONSTRAINTS PLAN - SHEETS 1 TO 5 IN APPENDIX 7.4 (TR010066/APP/6.3)
  - HEDGEROW PLANS SHEETS 1 TO 5 (TR010066/APP/2.11)
  - ENGINEERING PLANS SHEETS 1 TO 11 (TR010066/APP/2.5)
  - GENERAL ARRANGEMENT SHEETS 1 TO 5 (TR010066/APP/2.6)
  - DRAINAGE PLANS SHEETS 1 TO 5 (TR010066/APP/2.7)
3. FOR LANDSCAPE ELEMENT AND ENVIRONMENTAL ELEMENT CODES REFER TO DMRB LD117 LANDSCAPE DESIGN.
4. DO NOT SCALE FROM THIS DRAWING.



P01	18/10/24	FOR DCO SUBMISSION	APad	SWel	JLas
REV	DATE	REVISION NOTE	ORG	CHK'D	APPD



PROJECT TITLE	A46 COVENTRY JUNCTIONS (WALSgrave)
---------------	------------------------------------

PROJECT STAGE	DCO APPLICATION
---------------	-----------------

DRAWING TITLE

FIGURE 2.4 SHEET 2 OF 5  
ENVIRONMENTAL MASTERPLAN FOR DCO  
SUBMISSION (LANDSCAPE AND ECOLOGY)

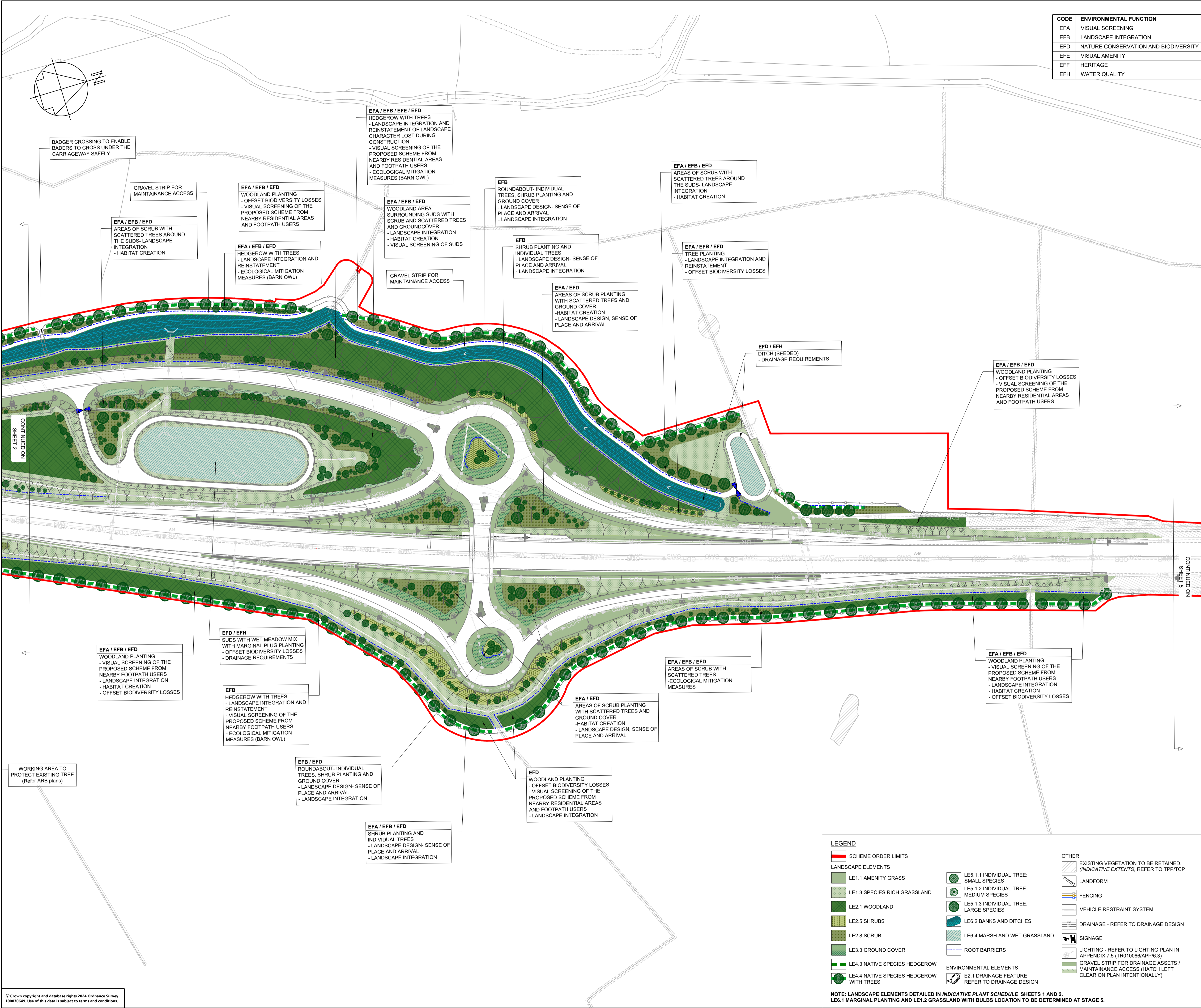
DEVELOPMENT CONSENT ORDER (DCO) - APPLICATION NUMBER  
TR010066/APP/6.2

SUITABILITY  
FOR INFORMATION

SHEET SIZE	SCALE	STATUS	REVISION
A1	1:1250	S2	P01
DRAWING NUMBER			
HE604820-OIL-ELS-00-DR-LE-32002			

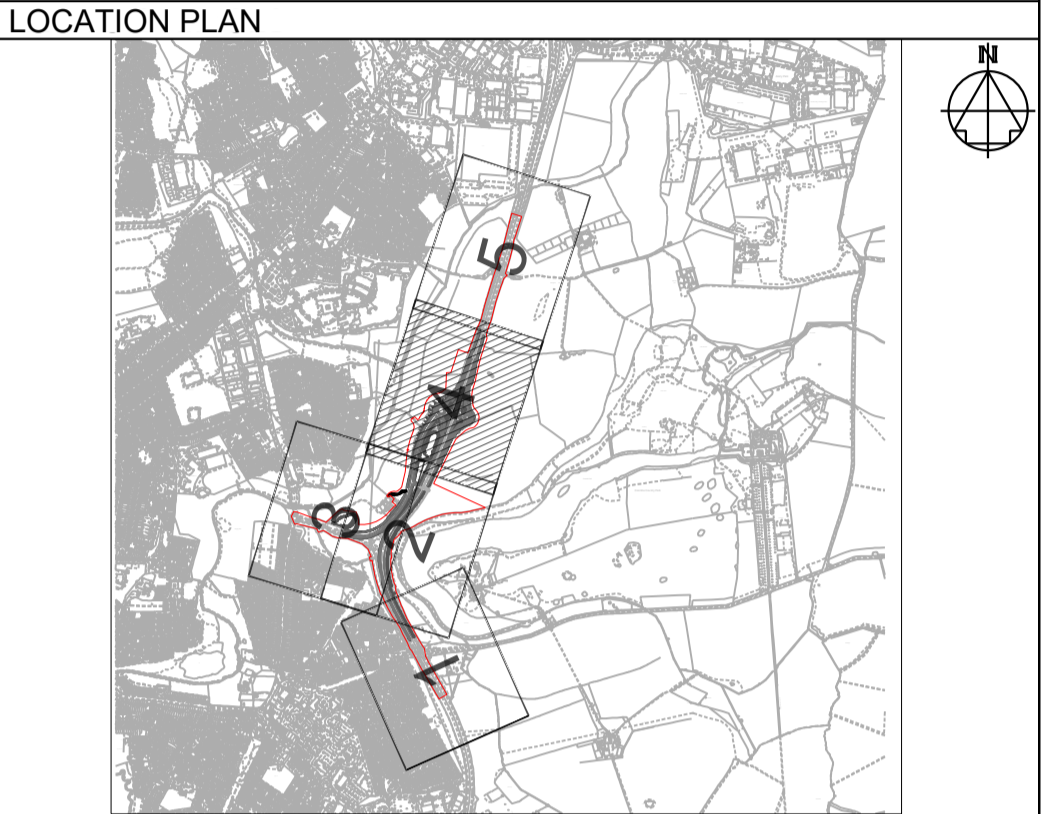
CODE	ENVIRONMENTAL FUNCTION
EFA	VISUAL SCREENING
EFB	LANDSCAPE INTEGRATION
EFD	NATURE CONSERVATION AND BIODIVERSITY
EFE	VISUAL AMENITY
EFF	HERITAGE
EFH	WATER QUALITY





CODE	ENVIRONMENTAL FUNCTION
EFA	VISUAL SCREENING
EFB	LANDSCAPE INTEGRATION
EFD	NATURE CONSERVATION AND BIODIVERSITY
EFE	VISUAL AMENITY
EFF	HERITAGE
EFH	WATER QUALITY

- NOTES**
- THIS DRAWING SHALL BE USED FOR THE PURPOSE SHOWN IN THE TITLE BOX ONLY.
  - THIS DRAWING IS TO BE READ IN CONJUNCTION WITH ALL RELEVANT DRAWINGS / DESIGN ELEMENTS. ALL ASSOCIATED DESIGN INFORMATION IS SHOWN FOR REFERENCE ONLY. REFER TO SPECIFIC DRAWING PACKAGE FOR FURTHER DETAILS.
    - ENVIRONMENTAL MASTERPLAN FOR DCO SUBMISSION OVERVIEW PLAN AND LEGEND
    - ENVIRONMENTAL MASTERPLAN FOR DCO SUBMISSION (LANDSCAPE & ECOLOGY) SHEETS 1 TO 5
    - TREE PROTECTION PLAN - SHEETS 1 TO 5 IN APPENDIX 7.4 (TR010066/APP/6.3)
    - TREE CONSTRAINTS PLAN - SHEETS 1 TO 5 IN APPENDIX 7.4 (TR010066/APP/6.3)
    - HEDGEROW PLANS SHEETS 1 TO 5 (TR010066/APP/2.11)
    - ENGINEERING PLANS SHEETS 1 TO 11 (TR010066/APP/2.5)
    - GENERAL ARRANGEMENT PLANS SHEETS 1 TO 5 (TR010066/APP/2.6)
    - DRAINAGE PLANS SHEETS 1 TO 5 (TR010066/APP/2.7)
  - FOR LANDSCAPE ELEMENT AND ENVIRONMENTAL ELEMENT CODES REFER TO DMRB LD117 LANDSCAPE DESIGN.
  - DO NOT SCALE FROM THIS DRAWING.



P01	18/10/24	FOR DCO SUBMISSION	APad	SWel	JLas
REV	DATE	REVISION NOTE	ORG	CHKD	APPD
CLIENT					



PROJECT TITLE				
A46 COVENTRY JUNCTIONS (WALSGRAVE)				
PROJECT STAGE				
DCO APPLICATION				
DRAWING TITLE				
FIGURE 2.4 SHEET 4 OF 5				
ENVIRONMENTAL MASTERPLAN FOR DCO SUBMISSION (LANDSCAPE AND ECOLOGY)				
DEVELOPMENT CONSENT ORDER (DCO) - APPLICATION NUMBER				
TR010066/APP/6.2				
SUITABILITY				
FOR INFORMATION				
SHEET SIZE	SCALE	STATUS	REVISION	
A1	1:1250	S2	P01	
DRAWING NUMBER				
HE604820-OIL-ELS-00-DR-LE-32004				

**LEGEND**

**SCHEME ORDER LIMITS**

- SCHEME ORDER LIMITS

**LANDSCAPE ELEMENTS**

- LE1.1 AMENITY GRASS
- LE1.3 SPECIES RICH GRASSLAND
- LE2.1 WOODLAND
- LE2.5 SHRUBS
- LE2.8 SCRUB
- LE3.3 GROUND COVER
- LE4.3 NATIVE SPECIES HEDGEROW
- LE4.4 NATIVE SPECIES HEDGEROW WITH TREES

**ENVIRONMENTAL ELEMENTS**

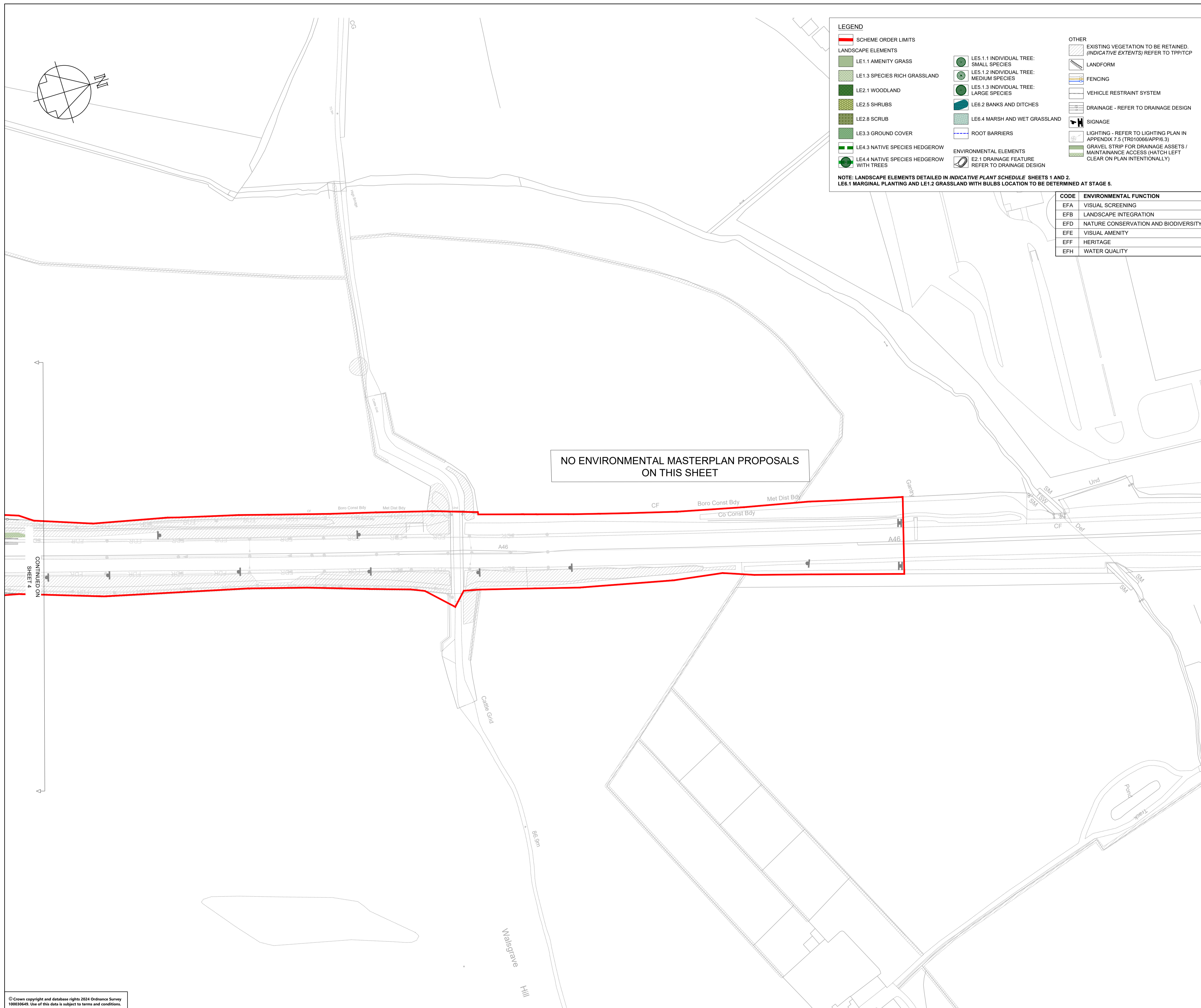
- E2.1 DRAINAGE FEATURE REFER TO DRAINAGE DESIGN

**OTHER**

- EXISTING VEGETATION TO BE RETAINED. (INDICATIVE EXTENTS) REFER TO TPP/TCP
- LANDFORM
- FENCING
- VEHICLE RESTRAINT SYSTEM
- DRAINAGE - REFER TO DRAINAGE DESIGN
- SIGNAGE
- LIGHTING - REFER TO LIGHTING PLAN IN APPENDIX 7.5 (TR010066/APP/6.3)
- GRAVEL STRIP FOR DRAINAGE ASSETS / MAINTENANCE ACCESS (HATCH LEFT CLEAR ON PLAN INTENTIONALLY)

**LANDSCAPE ELEMENTS DETAILED IN INDICATIVE PLANT SCHEDULE SHEETS 1 AND 2.**

- LE6.1 MARGINAL PLANTING AND LE1.2 GRASSLAND WITH BULBS LOCATION TO BE DETERMINED AT STAGE 5.



CODE	ENVIRONMENTAL FUNCTION
EFA	VISUAL SCREENING
EFB	LANDSCAPE INTEGRATION
EFD	NATURE CONSERVATION AND BIODIVERSITY
EFE	VISUAL AMENITY
EFF	HERITAGE
EFH	WATER QUALITY

## NOTES

1. THIS DRAWING SHALL BE USED FOR THE PURPOSE SHOWN IN THE TITLE BOX ONLY.
2. THIS DRAWING IS TO BE READ IN CONJUNCTION WITH ALL RELEVANT DRAWINGS / DESIGN ELEMENTS ALL ASSOCIATED DESIGN INFORMATION IS SHOWN FOR REFERENCE ONLY. REFER TO SPECIFIC DRAWING PACKAGE FOR FURTHER DETAILS.
  - ENVIRONMENTAL MASTERPLAN FOR DCO SUBMISSION OVERVIEW PLAN AND LEGEND
  - ENVIRONMENTAL MASTERPLAN FOR DCO SUBMISSION (LANDSCAPE & ECOLOGY) SHEETS 1 TO 5
    - TREE PROTECTION PLAN - SHEETS 1 TO 5 IN APPENDIX 7.4 (TR010066/APP/6.3)
    - TREE CONSTRAINTS PLAN - SHEETS 1 TO 5 IN APPENDIX 7.4 (TR010066/APP/6.3)
  - HEDGEROW PLANS SHEETS 1 TO 5 (TR010066/APP/2.11)
  - ENGINEERING PLANS SHEETS 1 TO 11 (TR010066/APP/2.5)
  - GENERAL ARRANGEMENT PLANS SHEETS 1 TO 5 (TR010066/APP/2.6)
  - DRAINAGE PLANS SHEETS 1 TO 5 (TR010066/APP/2.7)
3. FOR LANDSCAPE ELEMENT AND ENVIRONMENTAL ELEMENT CODES REFER TO DMRB LD117 LANDSCAPE DESIGN.
4. DO NOT SCALE FROM THIS DRAWING.

## LOCATION PLAN

[illegible]

P01	18/10/24	FOR DCO SUBMISSION	APad	SWel	JLas
REV	DATE	REVISION NOTE	ORG	CHK'D	APP'D

CLIENT



PROJECT TITLE

## A46 COVENTRY JUNCTIONS (WALSgrave)

PROJECT STAGE

## DCO APPLICATION

DRAWING TITLE

FIGURE 2.4 SHEET 5 OF 5  
ENVIRONMENTAL MASTERPLAN FOR DCO  
SUBMISSION (LANDSCAPE AND ECOLOGY)

DEVELOPMENT CONSENT ORDER (DCO) - APPLICATION NUMBER

TR010066/APP/6.2

SUITABILITY

FOR INFORMATION

SHEET SIZE A1	SCALE 1:1250	STATUS S2	REVISION P01
------------------	-----------------	--------------	-----------------

DRAWING NUMBER

HE604820-OIL-ELS-00-DR-LE-32005

	<b><u>LE1.1 Amenity grass areas</u></b>																								
	<b>SEED MIX:</b>																								
	Germinal amenity: A18 - Road verge and embankments																								
	<b>SOWING RATES:</b>																								
	Sowing rate on bare ground: 35g/m²																								
	Overseeding rate on thin areas: 20g/m²																								
	<b>SPECIES:</b>																								
	<table><tr><th>LATIN NAME</th><th>COMMON NAME</th><th>% OF MIX</th></tr><tr><td>Agrostis castellana</td><td>Highland browntop bentgrass</td><td>5</td></tr><tr><td>Festuca rubra rubra</td><td>Corall strong creeping red fescue</td><td>40</td></tr><tr><td>Festuca rubra commutata</td><td>Joanna chewings fescue</td><td>10</td></tr><tr><td>Lolium perenne</td><td>Agreement perennial ryegrass</td><td>12.5</td></tr><tr><td>Lolium perenne</td><td>Zurich perennial ryegrass</td><td>10</td></tr><tr><td>Poa pratensis</td><td>Miracle smooth stalked meadow grass</td><td>20</td></tr><tr><td>Trifolium repens</td><td>Aberlasting (small) w clove</td><td>2.5</td></tr></table>	LATIN NAME	COMMON NAME	% OF MIX	Agrostis castellana	Highland browntop bentgrass	5	Festuca rubra rubra	Corall strong creeping red fescue	40	Festuca rubra commutata	Joanna chewings fescue	10	Lolium perenne	Agreement perennial ryegrass	12.5	Lolium perenne	Zurich perennial ryegrass	10	Poa pratensis	Miracle smooth stalked meadow grass	20	Trifolium repens	Aberlasting (small) w clove	2.5
LATIN NAME	COMMON NAME	% OF MIX																							
Agrostis castellana	Highland browntop bentgrass	5																							
Festuca rubra rubra	Corall strong creeping red fescue	40																							
Festuca rubra commutata	Joanna chewings fescue	10																							
Lolium perenne	Agreement perennial ryegrass	12.5																							
Lolium perenne	Zurich perennial ryegrass	10																							
Poa pratensis	Miracle smooth stalked meadow grass	20																							
Trifolium repens	Aberlasting (small) w clove	2.5																							

	<b><u>LE1.2 Grassland with bulbs</u></b>		
	Amenity grass seed mixture selected for LE1.2 is the same as LE1.1		
	Locations to be outlined at detailed design. (Stage 5)		
	<b>SEED MIX:</b>		
	Germinal amenity: A18 - Road verge and embankments		
	<b>Planting:</b>		
	<b><u>Bulb mix</u></b>		
	<b>SPECIES:</b>		
<b>LATIN NAME</b>		<b>COMMON NAME</b>	<b>% OF MIX</b>
Hyacinthoides non - scripta		Bluebell	50
Narcissus pseudoacorus		Daffodil	50

LE1.3 Species rich grassland (standard mix)		
SEED MIX:		
Emorsgate Seeds: EM10 – Tussock mixture		
<b>SOWING RATES:</b>		
Sowing Rate on bare ground: 4g/m <sup>2</sup>		
<b>SPECIES:</b>		
LATIN NAME	COMMON NAME	% OF MIX
<b>Wildflowers</b>		
Achillea millefolium	Yarrow	0.8
Agrimonia eupatoria	Agrimony	0.6
Arctium minus	Lesser Burdock	0.2
Centaurea nigra	Common Knapweed	2
Centaurea scabiosa	Greater Knapweed	1
Chaerophyllum temulum	Rough Chervil	0.4
Cruciata laevis	Crosswort	0.4
Daucus carota	Wild Carrot	1
Dipsacus fullonum	Wild Teasel	1.6
Filipendula ulmaria	Meadowsweet	0.6
Galium album	Hedge Bedstraw	1.8
Knautia anensis	Field Scabious	0.8
Lathyrus pratensis	Meadow Vetchling	0.4
Leucanthemum vulgare	Oxeye Daisy	1.6
Malva moschata	Musk Mallow	1.6
Plantago lanceolata	Ribwort Plantain	1.8
Poterium sanguisorba ssp sanguiorba	Salad Burnet	1.6
Silene dioica	Red Campion	1.2
Silene vulgaris	Bladder Campion	0.2
Vicia cracca	Tufted Vetch	0.4
<b>Grasses</b>		<b>80%</b>
Alopecurus pratensis	Meadow Foxtail	4
Cynosurus cristatus	Crested Dogstail	24
Dactylis glomerata	Cocksfoot	8
Festuca Rubra	Red Fescue	20
Poa pratensis	Smooth-stalked Meadow-grass	4
Schedonorus arundinaceus (Festuca arundinacea)	Tall Fescue	20

<b>LE13.2 Species rich grassland (custom mix)</b>		
Supplier suggested: Is Emorsgate seeds to be detailed at Stage 5.		
<b>SOWING RATES:</b>		
Sowing rate on bare ground: 4g/m <sup>2</sup>		
<b>SPECIES:</b>		
<b>LATIN NAME</b>	<b>COMMON NAME</b>	<b>% OF MIX</b>
<b>Wildflowers</b>		<b>20%</b>
Achillea millefolium	Yarrow	0.8
Agrimonia eupatoria	Agrimony	0.4
Arctium minus	Lesser Burdock	0.1
Centaurea scabiosa	Greater Knapweed	2.4
Chaerophyllum temulum	Rough Chervil	0.8
Cruciata laevipes	Crosswort	0.5
Daucus carota	Wild Carrot	1
Filipendula ulmaria	Meadowsweet	0.8
Galium album	Hedge Bedstraw	1.8
Knautia arvensis	Field Scabious	0.8
Leucanthemum vulgare	Oxeye Daisy	1.6
Lotus corniculatus	Birdsfoot Trefoil	0.4
Malva moschata	Musk Mallow	1.6
Plantago lanceolata	Ribwort Plantain	1.8
Poterium sanguisorba ssp sanguiorba	Salad Burnet	1.6
Silene dioica	Red Campion	1.6
Vicia cracca	Tufted Vetch	0.4
<b>Grasses</b>		<b>80%</b>
Alopecurus pratensis	Meadow Foxtail	4
Cynosurus cristatus	Crested Dogstail	28
Dactylis glomerata	Cocksfoot	8
Festuca Rubra	Red Fescue	20
Poa pratensis	Smooth-stalked Meadow-grass	4
Schedonorus arundinaceus (Festuca arundinacea)	Tall Fescue	20

L2.1 Woodland			
PLANTING GROUP AND SPACING:			
Transplants/ container grown to be planted in single species groups of 5 to 7 at 4m centres.			
Feathered trees in single species groups of 3 to 5 at 4m centres.			
Individual trees planted in single species or groups of 3 at 5m centres			
UNDER- SEEDING:			
Area to be under-seeded with Germinal Amenity A18 (road verge and embankments)			
LATIN NAME	COMMON NAME	FORM	% OF MIX
Acer campestre	Common Maple	Transplant - seed raised (60-80cm)	5
Acer campestre	Common Maple	Feathered (175-200cm)	2.5
Acer campestre	Common Maple	Standard Heavy (12-14cm girth)	2.5
Betula pendula	Common Silver Birch	Transplant - seed raised (60-80cm)	10
Betula pendula	Common Silver Birch	Feathered (175-200cm)	2.5
Betula pendula	Common Silver Birch	Standard Heavy (12-14cm girth)	2.5
Carpinus betulus	Hornbeam	Transplant - seed raised (60-80cm)	5
Carpinus betulus	Hornbeam	Feathered (175-200cm)	3
Carpinus betulus	Hornbeam	Standard Heavy (12-14cm girth)	2
Corylus avellana	Common Hazel	Transplant - seed raised (60-80cm)	7.5
Crataegus monogyna	Common Hawthorn	Transplant - seed raised (60-80cm)	7.5
Ilex aquifolium	Common Holly	Container (3L)	5
Malus sylvestris	Common Crab Apple	Transplant - seed raised (40-60cm)	10
Prunus padus	Bird cherry	Transplant - seed raised (60-80cm)	5
Prunus avium	Wild cherry	Transplant - seed raised (60-80cm)	5
Quercus robur	Common Oak	Transplant - seed raised (60-80cm)	12
Quercus robur	Common Oak	Feathered (175-200cm)	5
Sorbus torminalis	Wild service tree	Feathered (175-200cm)	5
Sorbus aucuparia	Rowan	Transplant - seed raised (60-80cm)	2
Sorbus aucuparia	Rowan	Standard Heavy (12-14cm girth)	5
Total			100


	<b>LE2.5 - Shrubs</b>			
	<b>PLANTING GROUP AND SPACING:</b>			
	Transplants/ container grown specimens to be planted in single species groups of 5 to 7 at 2m centres.			
	<b>UNDER- SEEDING:</b>			
	Area to be under-seeded with Germinal A18 (road verge and embankments)			
	<b>LATIN NAME</b>	<b>COMMON NAME</b>	<b>FORM</b>	<b>% OF MIX</b>
	Cornus sanguinea	Common Dogwood	Transplant - seed raised (40-60cm)	2.5
	Corylus avellana	Common Hazel	Transplant - seed raised (40-60cm)	25
	Crataegus monogyna	Common Hawthorn	Transplant - seed raised (40-60cm)	25
	Ilex aquifolium	Common Holly	Container (2L)	15
Ligustrum vulgare	Common Privet	Cutting (40-60cm)	20	
Viburnum lantana	Wayfaring tree	Transplant - seed raised (40-60cm)	5	
Viburnum opulus	Guelder Rose	Transplant - seed raised (60-80cm)	7.5	


	<b>LE2.8 - Scrub</b>			
	<b>PLANTING GROUP AND SPACING:</b>			
	Transplants/ container grown to be planted in single species groups of 5 to 7 at 2m centres.			
	<b>UNDER- SEEDING:</b>			
	Area to be under-seeded with Germinal A18 (road verge and embankments)			
	<b>LATIN NAME</b>	<b>COMMON NAME</b>	<b>FORM</b>	<b>% OF MIX</b>
	<i>Corylus avellana</i>	Common Hazel	Transplant - seed raised (40-60cm)	20
	<i>Crataegus monogyna</i>	Common Hawthorn	Transplant - seed raised (40-60cm)	20
	<i>Euonymus europaeus</i>	Spindle	Transplant - seed raised (40-60cm)	10
	<i>Rubus fruticosus</i>	Blackberry	0/1 cutting (40-60cm)	30
<i>Sambucus nigra</i>	Common Elder	Transplant - seed raised (40-60cm)	10	
<i>Viburnum opulus</i>	Gelder Rose	Transplant - seed raised (40-60cm)	10	

	<b>LE3.3 – Ground Cover</b>											
	Groundcover planting located on roundabouts positioned in line with visibility splay requirements											
	<b>PLANTING GROUP AND SPACING:</b>											
	Planted in swathes of single species blocks at 3 plants per m <sup>2</sup> .											
	<table><tr><th>LATIN NAME</th><th>COMMON NAME</th><th>FORM</th><th>% OF MIX</th></tr><tr><td>Hedera helix 'Gold Child'</td><td>Ivy 'Gold Child'</td><td>Container grown in 2L pots</td><td>50</td></tr><tr><td>Hedera helix 'Parsley Crested'</td><td>Ivy 'Parsley Crested'</td><td>Container grown in 2L pots</td><td>50</td></tr></table>	LATIN NAME	COMMON NAME	FORM	% OF MIX	Hedera helix 'Gold Child'	Ivy 'Gold Child'	Container grown in 2L pots	50	Hedera helix 'Parsley Crested'	Ivy 'Parsley Crested'	Container grown in 2L pots
LATIN NAME	COMMON NAME	FORM	% OF MIX									
Hedera helix 'Gold Child'	Ivy 'Gold Child'	Container grown in 2L pots	50									
Hedera helix 'Parsley Crested'	Ivy 'Parsley Crested'	Container grown in 2L pots	50									

	<b><u>LE4.3 – Native Species Hedgerows</u></b>		
	<b>PLANTING GROUP AND SPACING:</b>		
	Hedgerow planted in double rows 0.3m apart		
	Hawthorns planted in groups of 5-10		
	Container grown species to be planted in single species groups of 5 to 7		
	All other species planted in groups of 3-5		
LATIN NAME	COMMON NAME	FORM	% OF MIX
Acer campestre	Field maple	Transplant - seed raised (40-60cm)	5
Corylus avellana	Hazel	Transplant - seed raised (40-60cm)	25
Crataegus monogyna	Hawthorn	Transplant - seed raised (40-60cm)	45
Ilex aquifolium	Holly	Container (2L)	5
Ligustrum vulgare	Priwet	Transplant - seed raised (40-60cm)	10
Sambucus nigra	Elder	Transplant - seed raised (40-60cm)	5
Viburnum opulus	Gelder rose	Transplant - seed raised (40-60cm)	5

	LE4.3.1 - Native species hedgerow - <u>Hawthorn</u>		
	PLANTING GROUP AND SPACING:		
	Hedgerow planted in double rows 0.3m apart		
	LATIN NAME	COMMON NAME	FORM
	Crataegus monogyna	Hawthorn	Transplant - seed raised (40-60cm)
			100

	<b>LE4.4 – Native species hedgerow with trees: Hedgerow mix</b>			
	<b>PLANTING GROUP AND SPACING:</b>			
	Hedgerow planted in double rows 0.3m apart			
	Hawthorns planted in groups of 5-10			
	Container grown species to be planted in single species groups of 5 to 7			
	All other species planted in groups of 3-5			
	<b>LATIN NAME</b>	<b>COMMON NAME</b>	<b>FORM</b>	<b>% OF MIX</b>
	Acer campestre	Field maple	Transplant - seed raised (40-60cm)	5
	Corylus avellana	Hazel	Transplant - seed raised (40-60cm)	25
	Crataegus monogyna	Hawthorn	Transplant - seed raised (40-60cm)	45
Ilex aquifolium	Holly	Container (2L)	5	
Ligustrum vulgare	Privet	Transplant - seed raised (40-60cm)	10	
Sambucus nigra	Elder	Transplant - seed raised (40-60cm)	5	
Viburnum opulus	Gelder rose	Transplant - seed raised (40-60cm)	5	

	<b>LE4.4 – Native species hedgerow with trees: Tree mix</b>			
	<b>PLANTING GROUP AND SPACING:</b>			
Planting groups & spacing to be shown on detailed design planting plans				
<b>LATIN NAME</b>	<b>COMMON NAME</b>	<b>FORM</b>	<b>% OF MIX</b>	
Acer campestre	Field maple	Standard Extra Heavy (14-16 cm girth)	5	
Carpinus betulus	Hornbeam	Standard Extra Heavy (14-16 cm girth)	20	
Fagus sylvatica	Beech	Standard Extra Heavy (14-16 cm girth)	7.5	
Prunus avium	Wild cherry	Standard Extra Heavy (14-16 cm girth)	7.5	
Quercus robur	Common Oak	Standard Extra Heavy (14-16 cm girth)	40	
Tilia cordata	Small-leaved Lime	Standard Extra Heavy (14-16 cm girth)	15	
Sorbus aucuparia	Rowan	Standard Extra Heavy (14-16 cm girth)	5	

	<b>LE5.1 – Individual trees</b>		
	Planting groups & spacing to be shown on detailed design planting plans Small, medium and large trees to be determined at Stage 5		
	<b>LATIN NAME</b>	<b>COMMON NAME</b>	<b>Form</b>
	<i>Acer campestre</i>	Field maple	Standard Heavy (12-14cm girth)
	<i>Betula pendula</i>	Silver birch	Standard Heavy (12-14cm girth)
	<i>Carpinus betulus</i>	Hornbeam	Standard Heavy (12-14cm girth)
	<i>Crataegus monogyna</i>	Hawthorn	Standard Heavy (12-14cm girth)
	<i>Fagus sylvatica</i>	Beech	Standard Heavy (12-14cm girth)
	<i>Malus sylvestris</i>	Crab apple	Standard Heavy (12-14cm girth)
	<i>Pinus sylvestris</i>	Scots pine	300 – 350 5x, leader with laterals, clear stem 150-175
	<i>Prunus avium</i>	Wild cherry	Standard Heavy (12-14cm girth)
	<i>Prunus padus</i>	Bird cherry	Standard Heavy (12-14cm girth)
	<i>Quercus robur</i>	Common oak	Standard Heavy (12-14cm girth)
	<i>Sorbus aria</i>	Whitbeam	Standard Heavy (12-14cm girth)
	<i>Sorbus aucuparia</i>	Rowan	Standard Heavy (12-14cm girth)
	<i>Tilia cordata</i>	Lime	Standard Heavy (12-14cm girth)

## NOTES

1. THIS DRAWING SHALL BE USED FOR THE PURPOSE SHOWN IN THE TITLE BOX ONLY
2. THIS DRAWING IS TO BE READ IN CONJUNCTION WITH ALL RELEVANT DRAWINGS / DESIGN ELEMENTS.
  - ENVIRONMENTAL MASTERPLAN FOR DCO SUBMISSION OVERVIEW PLAN AND LEGEND
  - ENVIRONMENTAL MASTERPLAN FOR DCO SUBMISSION (LANDSCAPE & ECOLOGY SHEETS 1.T.O.5)

LOCATION PLAN

P01	18/10/24	FOR DCO SUBMISSION	APad	SWel	JLas
REV	DATE	REVISION NOTE	ORG	CHKD	APPD



PROJECT TITLE

## A46 COVENTRY JUNCTIONS (WALSGRAVE)

PROJECT STAGE

## DCO APPLICATION

DRAWING TITLE

FIGURE 2.4 SHEET 1 OF 2  
ENVIRONMENTAL MASTERPLAN  
INDICATIVE PLANT SCHEDULE

DEVELOPMENT CONSENT ORDER (DCO) - APPLICATION NUMBER

TR010066/APP/6.2

## SUITABILITY

FOR INFORMATION

SHEET SIZE A1	SCALE N/A	STATUS S2	REVISION P01
------------------	--------------	--------------	-----------------

DRAWING NUMBER

HE604820-OIL-ELS-00-DR-LE-32006

